



ARKHUB STORAGE AND ARCHIVE

**Low cost, reliable,
highly scalable, easy to use
archive storage.**

ARKHUB STORAGE AND ARCHIVE SUMMARY

ArkHub provides low cost archive storage, which is agnostic across industries, highly reliable, highly scalable, easy to use and with all the features of the major hyperscale storage and archive solution vendors but without the ingress, egress, retrieval, support and region costs which the major vendors levy their clients.

LOW-COST STORAGE, SIMPLE PRICING

MediaHub Australia has developed ArkHub which is a low-cost storage service that provides secure, durable, and flexible storage for data backup-archive, with a considerably simplified pricing model.

The ArkHub pricing allows clients to store their data for only a monthly storage cost, with no further ingress or egress charges, no early deletion /embargo fees, and no region fees.

ArkHub does not limit clients to storing their data specifically as an 'archive' and services both 'hot' and 'cold' data. Clients can upload a single file or perform a bulk upload with no price difference. ArkHub is a fixed price per GB per month fee.

FAST, RELIABLE, EASY TO USE

ArkHub provides low-cost storage with a simplified pricing model, the same or better functionality, reliability and ease of use compared to the current hyperscale public cloud storage providers of storage and archive solutions.

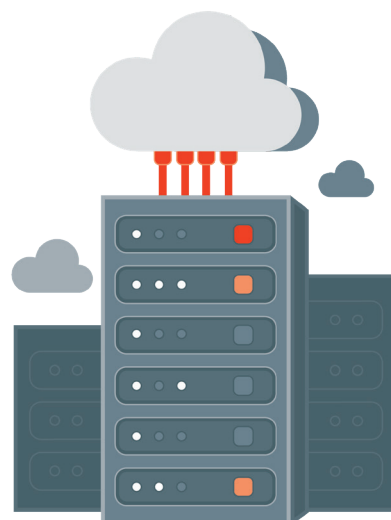
ArkHub provides secure ease of access via the public internet using ArkHub WebConnect or via direct connection using ArkHub DirectConnect. ArkHub has a key foundational layer of connectivity (MediaHub's Dark Fibre platform "FibreHub") that allows for zero ingress/egress fees, and high-speed data transfer between all the major broadcasters and Australian datacentres.

ArkHub is a 'vendor backed' solution utilising the Hewlett Packard Enterprise's (HPE) Apollo 4000 Systems with Scality RING Scalable Storage, with complete 'self-healing' capabilities. The technology powering ArkHub is used by over 500 million 'end-users' worldwide with over 800 billion objects in production.

The ArkHub system has multi-Exabyte scalability, is optimised for Enterprise Cloud environments and is 'always-on' with a 100% availability SLA and 14x9 durability SLA.

ADDITIONAL BENEFITS OF ARKHUB

- Storage is 100% disk based
- All clients have access to the most premium dedicated care services (customer support)
- Designed for clients to self-manage their own data and content 24/7
- Access from anywhere in the world via ubiquitous internet connections
- Fastest transfer speed whilst maintaining 100% data integrity
- Advanced inflight security for data in transit with physical and Layer 1 protection
- Encryption using SSL for data in transit



ARKHUB SERVICES



ARCHIVE STORAGE

Data is synchronously stored across a minimum of 3 physical datacenters



ARCHIVE STORAGE WITH 2ND COPY

Two copies of data are synchronously stored across a minimum of 3 physical datacenters on a separate datacenter ring to the primary copy



INFLIGHT ENCRYPTION OF DATA

Encryption using SSL for data in transit (free of charge)



ADVANCED INFLIGHT SECURITY

Physical and Layer 1 protection for data in transit



BANDWIDTH BURST

Bandwidth burst options up to 10GB/s



MEDIA ASSET MANAGEMENT

Media Files can be transferred from ArkHub to CacheHub, 'Managed' and Transferred back to ArkHub



FLEXHUB TRANSCODING SERVICES

Data files can be transcoded/converted prior to data storage or any time after



SECURE INTERNET TRANSFER TO ARKHUB

Provides secure and Fast, Geo-Diverse data storage file transfers over Open Networks using ArkHub WebConnect



NAS ARCHIVER

Identify and migrate inactive NAS data automatically and transparently to ArkHub

ARKHUB COMPARISON



ARKHUB STORAGE AND ARCHIVE

AMAZON S3 GLACIER

MICROSOFT AZURE BLOB ARCHIVE - GRS

GOOGLE CLOUD COLDLINE

No Retrieval Cost	✓	✗	✗	✗
No Early Deletion Fees	✓	✗	✗	✗
No Data Ingress Costs	✓	✗	✗	✗
No Data Egress Costs	✓	✗	✗	✗
No Business Support Costs	✓	✗	✗	✗
'14 x Nines Durability'	✓	✗	✓	✗
No minimum Storage Duration	✓	✗	✗	✗
Millisecond Access Latency	✓	✗	✗	✓
100% Availability SLA	✓	✗	✗	✗

ACCESS OPTIONS

ArkHub provides three options for accessing your ArkHub storage.

All access options require clients to access client connectors which are deployed on a per-client basis.

PUBLIC INTERNET BASED ACCESS - VIA ARKHUB WEBCONNECT (EITHER SHARED OR DISCREET PER CLIENT)

Using ArkHub WebConnect provides secure and accelerated access via the internet from anywhere in the world. ArkHub WebConnect is an enterprise-class file transfer management platform based on the Caton Cydex Engine. With significantly faster transmission speeds than traditional IP transfer solutions, ArkHub Web Access breaks through the traditional bottlenecks in sending large files anywhere they need to go.

Featuring advanced user management, security, and workflow automation, ArkHub WebConnect provides a secure and fast way for organisations to share files, all with the ease of sending an email.

ArkHub WebConnect transfers files without limitation on size and type, from a simple text file to massive 4K video files. ArkHub WebConnect optimizes CPU and bandwidth performance to provide the fastest and most secure file transfers possible. ArkHub WebConnect also acts as a faux-firewall between internet traffic and ArkHub.

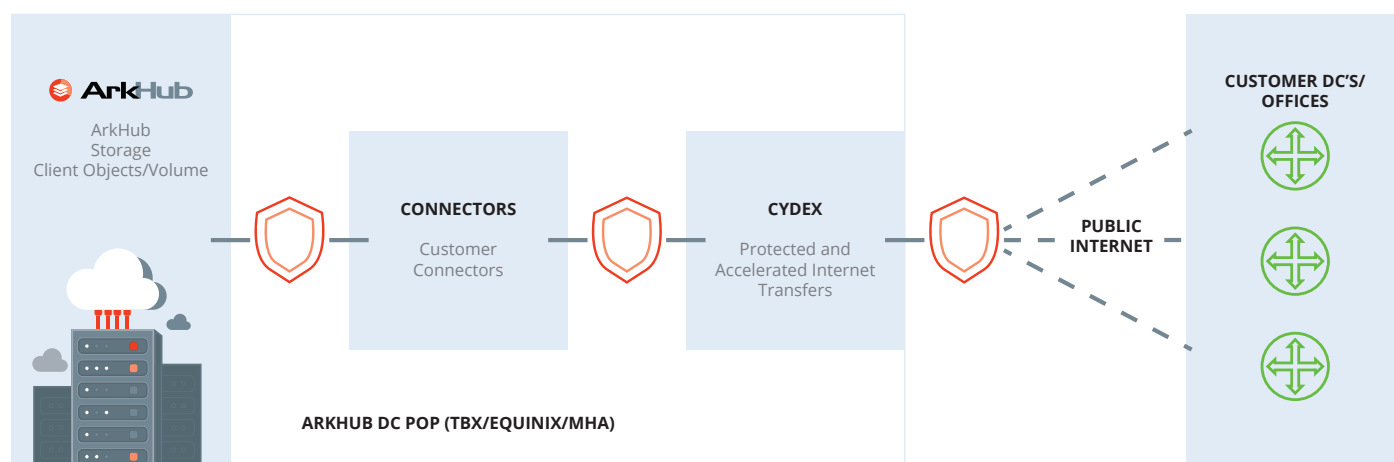
There are two ArkHub WebConnect options proposed:

OPTION 1

Clients can be provided with ArkHub WebConnect user accounts, and these users can Upload/download files from various authorised ArkHub s3 buckets. Clients would be charged for user accounts on a monthly or yearly basis.

OPTION 2

For clients who require additional security, system segregation or large bandwidth requirement, separate ArkHub WebConnect systems can be deployed (at an additional access fee per instance). Typical applications for separate ArkHub WebConnect systems would be a large organisation with multiple regional offices and user accounts. MediaHub would charge a one-off fee for the private ArkHub WebConnect instance and VM infrastructure to run this on. Dedicated internet bandwidth and ArkHub WebConnect User accounts would be billed either monthly, yearly or could be contract term based.



We would like to hear from you.
Contact us at arkhubsales@catontechnology.com

